

Instructions: Show all work. Give exact answers unless specifically asked to round.

1. Find the reference angle for:

a. -335°

25°

b. $-\frac{25\pi}{6}$

$\pi/6$

2. Find the value of the other five trig functions if $\sin \theta = \frac{5}{13}$, and θ in Q II.

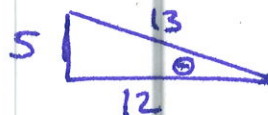
$\cos \theta = -\frac{12}{13}$

$\tan \theta = -\frac{5}{12}$

$\cot \theta = -\frac{12}{5}$

$\sec \theta = -\frac{13}{12}$

$\csc \theta = \frac{13}{5}$



3. Find the exact value of $\cot \frac{13\pi}{3}$.

$\cot \frac{13\pi}{3} = \cot \frac{\pi}{3}$

$= \frac{1}{\sqrt{3}}$

